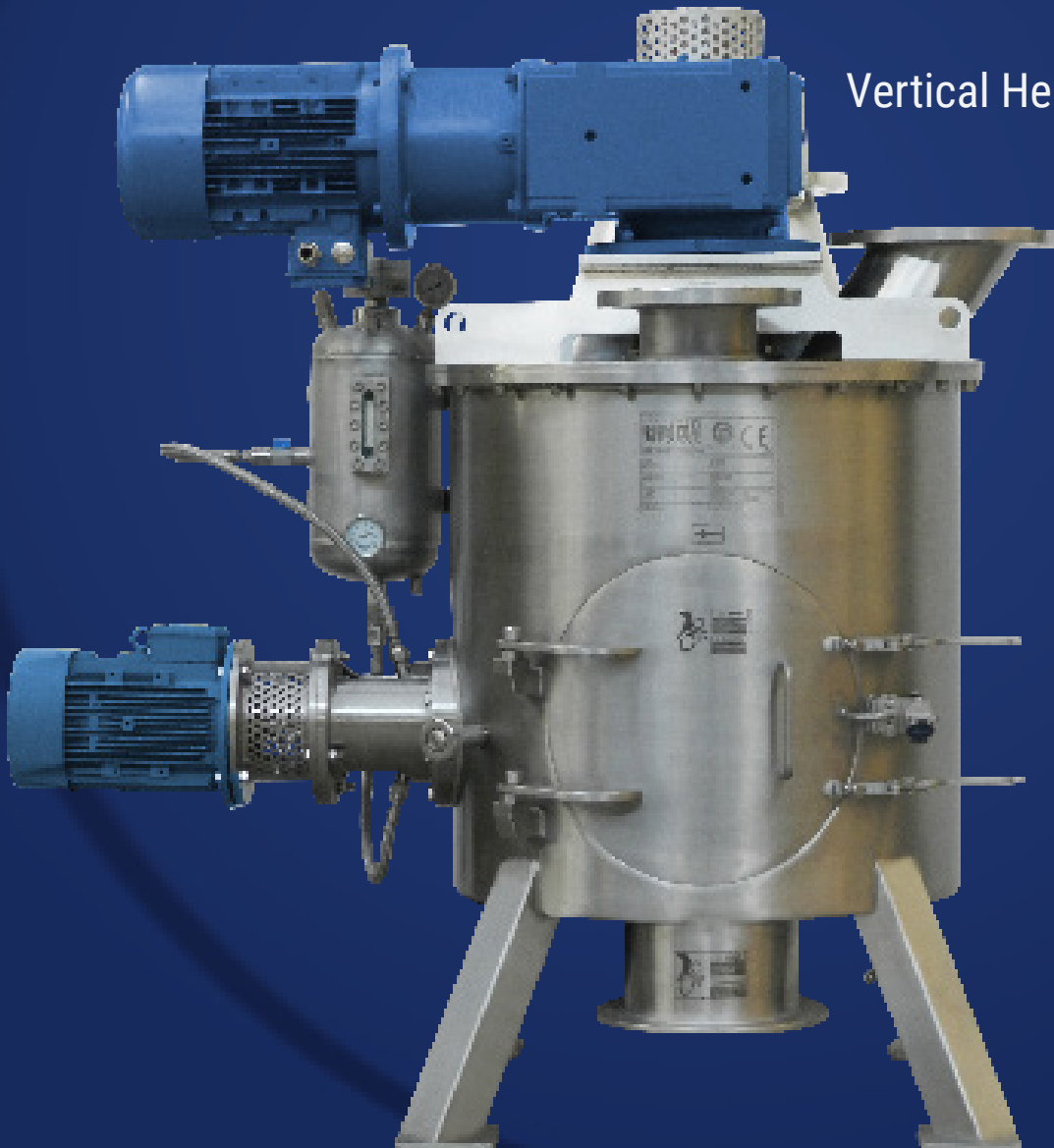


Vertical Helix Mixer



PRODUCT INFORMATION



The vertical helix mixer meets highest requirements. The mixer is suitable for the processing of powder products, wet goods and pastes in various designs and dimensions. Considering very high hygiene standards the mixer provides excellent mixes, short mixing times and large batches.

APPLICATIONS

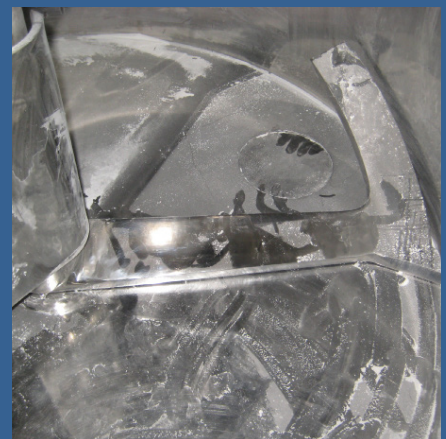
- Food industry
- Animal feed industry
- Chemical industry
- Pharmaceutical industry

DESCRIPTION

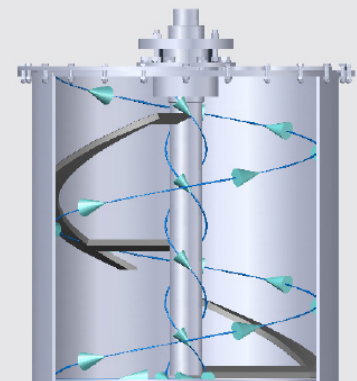
The vertical mixing tool runs at variable speed. The mix is at the outer end of the mixing chamber conveyed upwardly and from there in the center of the container again into a downward flow.

The material to be mixed are thereby three-dimensionally reshaped.

The mixing chamber is made of stainless steel. A laterally inserted door allows inspection and cleaning. Pneumatically opening outlets are located on the bottom. The mixing shaft is only supported on the top. There are no housing or bearing elements in the mixing area.



Product Flow



CERTIFICATIONS

Isimsan manufactures according to the following International directives and regulations:

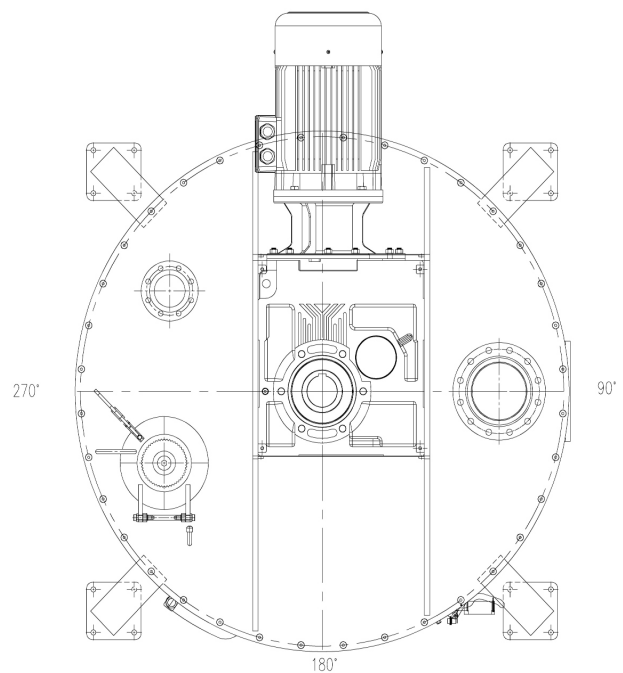
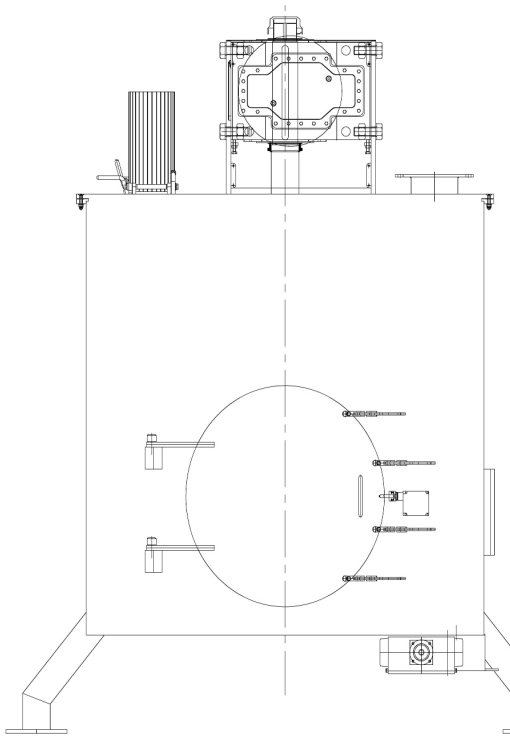
- CE 2006/42/EC (Machinery Directive)
- CE 2014/29/EU (Pressure Vessel Directive)
- CE 2014/68/EU (Pressure Vessel Directive)
- ATEX product line 2014/34/EU
- EHEDG (Hygiene Guidelines)
- GMP (Good Manufacturing Practices)
- FDA (U.S. Food and Drug Administration)
- EAC (EuroAsia Conformity)

Isimsan is certified in terms of quality management (ISO 9001) environmental standards (ISO 14001), welding technology and supervision (ISO 3834 & 14731) and control technology (2006/42/EC).



CONSTRUCTION DETAILS

Criteria for choosing the right design, go far beyond mere functional properties. Vertical mixers are designed according to customer requirements in order to provide highest hygiene standards, easy cleanability and to apply manufacturing options in different specifications.



TECHNICAL SPECIFICATIONS



FEATURES

Body volume: 0.3 to 40 m3

Body shape: Cylindrical

Bottom form: Flat

Material: Stainless steel, wear resistant steels, duplex steel etc.

Interior Surface: Untreated, Polished (Ra~0.2)

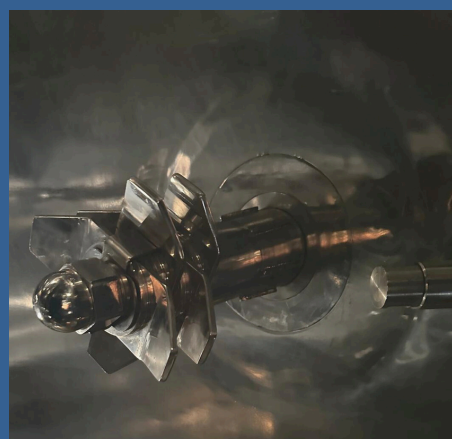
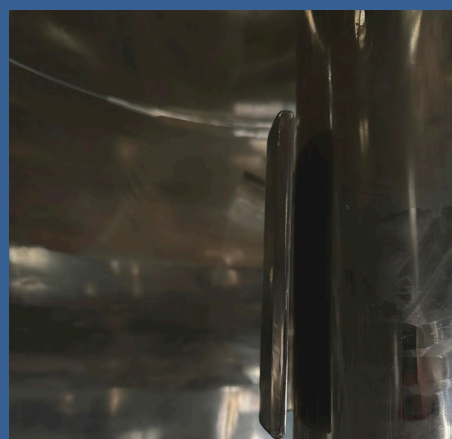
Shaft: Single

Blades: Single helix

Gearbox: Yilmaz, Nord, Bonfiglioli, Sew Eurodrive, etc.

Engines: ABB, Sew Eurodrive, Gamak, Nord, Weg, etc.

Mechanical seals (Chopper only): Eagle Burgmann, Chesterton, AESSEAL etc.



OPTIONS

- Sampling Cover
- Sightglass with illumination
- Additional inspection door
- Heating & cooling jacket
- High speed choppers
- Liquid dosing systems
- Single or double-walled design (depending on process)
- Design for vacuum and pressure
- Various automation sensors
- CIP
- Frames and platforms
- Frequency controls
- Remote controls



VERTICAL HELIX MIXER



The table below refers to the standard performance of Vertical Helix Mixers. Choppers and control panels are not included.
Standard performance features as follows:

● CHAMBER

Material: 1.4301 (AISI 304)

Interior Surface: Polished

● BLADES

Material: 1.4301 (AISI 304)

● SHAFT

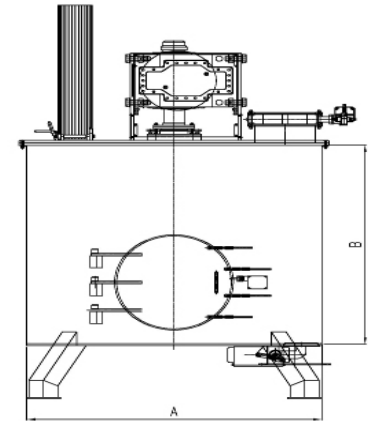
Material: 1.4301 (AISI 304)

● Safety lock

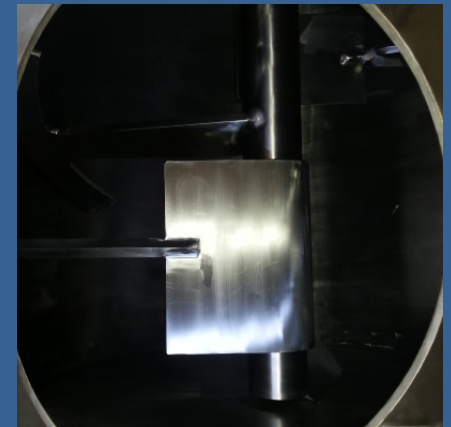
● Pneumatic discharge covers

● Gearbox with engine

Model No	A	B	Working Capacity %10 - %80
	mm	mm	lt
D 300	Ø 750	750	30 - 240
D 650	Ø 955	950	65 - 540
D 1.050	Ø 1.116	1.100	105 - 860
D 1.350	Ø 1.200	1.200	135 - 1.080
D 2.550	Ø 1.730	1.100	255 - 2.070
D 3.500	Ø 1.730	1.500	350 - 2.820
D 5.100	Ø 1.930	1.750	510 - 4.000
D 6.250	Ø 1.930	2.150	625 - 5.000
D 8.100	Ø 2.280	2.000	810 - 6.530
D 13.500	Ø 2.800	2.200	1.350 - 10.800
D 19.400	Ø 2.800	3.150	1.940 - 15.500
D 26.400	Ø 3.100	3.500	2.640 - 21.100
D 39.000	Ø 3.460	4.150	3.900 - 31.200
D 51.200	Ø 3.850	4.400	5.120 - 41.000



Isimsan designs according to customer specifications.



CERTIFICATIONS

Isimsan manufactures according to the following International directives and regulations:

- CE 2006/42/EC (Machinery Directive)
- CE 2014/29/EU (Pressure Vessel Directive)
- CE 2014/68/EU (Pressure Vessel Directive)
- ATEX product line 2014/34/EU
- EHEDG (Hygiene Guidelines)
- GMP (Good Manufacturing Practices)
- FDA (U.S. Food and Drug Administration)
- EAC (EuroAsia Conformity)

Isimsan is certified in terms of quality management (ISO 9001),
environmental standards (ISO 14001), welding technology and supervision (ISO 3834 & 14731)
and control technology (2006/42/EC).

ISIMSAN®



WORLDWIDE SUPPORT

E-MAIL : sales @isimsan.com.tr

PHONE : + 90 232 877 05 82

Address: Cumhuriyet Mah.9081 Sok. No:59/1 Ulucak
Kemalpaşa İZMİR