

SOLID MIXERS

for powder · granulates · paste like products



35 years experience...

The mixing process, one of the most important basic operations, is used in almost all fields of the food, of the chemical and building material industry.

Isimsan is developing mixers for more than 35 years now. The process engineering for mixing is one of our main activities. Given a large number of relevant criteria, it is necessary to have a serious experience in selecting the optimum mixing system. For this reason, the planning of mixing systems, even if based on standard solutions, almost always requires a special solution approach.

Our specialists have technical knowledge on different process technologies. Against this background, simple and complex requirements for mixing systems are always solved by taking into account previous and subsequent processes.

With a constantly growing knowledge, and with high material, production and service standards, Isimsan is providing top quality mixers with attractive prices.

Well named, long termed customers, sales and service representatives all over the world stands for our high reliability and client proximity. It is a pleasure for us to be there for you.

In this edition Isimsan present you its leading mixer solutions for powder, granules and paste like products.

Your sincerely,
Zeki Güner





Content

Process Efficiencies	4
Horizontal Plough and Paddle Mixer	5 - 8
Horizontal Ribbon Mixer	9 - 12
Vertical Helix Mixer	13 - 16
Certifications	17
Services	18
Contacts	19

PROCESS EFFICIENCIES

SPECIFICATIONS	HORIZONTAL PLOUGH AND PADDLE MIXER	HORIZONTAL RIBBON MIXER	VERTICAL HELIX MIXER
Mixes:	powder, granulates, paste like products	powder, granulates	powder, granulates, paste like products
Batch sizes:	500 - 20.000 liter	500 - 20.000 liter	300 - 40.000 liter
*Useful filling degree:	30 - 70%	40 - 70%	10 - 80%
Mixing time:	15 - 20 min.	20 - 30 min.	~ 5 min.
Cleaning time (including drying):	~ 30 min.	> 45 min.	~ 15 min.
Cleanliness level in %:	80 - 90%	70 - 80%	~ 98%
Compatible for choppers:	yes	no	yes

*Useful filling degree mentioned above, values calculated without chopper usage for Horizontal Plough Type Mixers and Vertical Helix Mixers.

HORIZONTAL PLOUGH AND PADDLE MIXER



THE STRONG AND GENTLE ONE

HORIZONTAL PLOUGH AND PADDLE MIXER

PROCESS EFFICIENCY

Mixes: Powder, granulates,
paste like products

Batch sizes: 500 - 20.000 liter

Useful filling degree: 30 - 70%

Mixing time: 15 - 20 min.

Cleaning time (including drying): ~ 30 min.

Cleanliness level in %: 80 - 90%

Compatible for choppers: yes

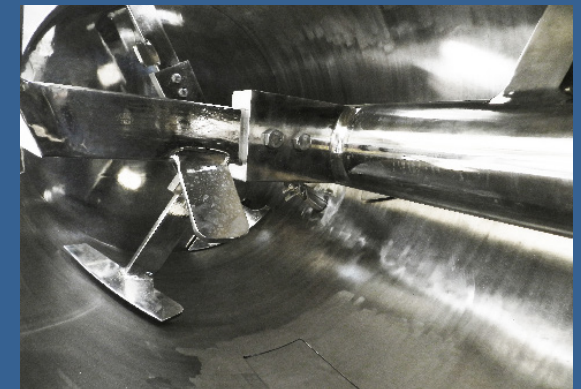
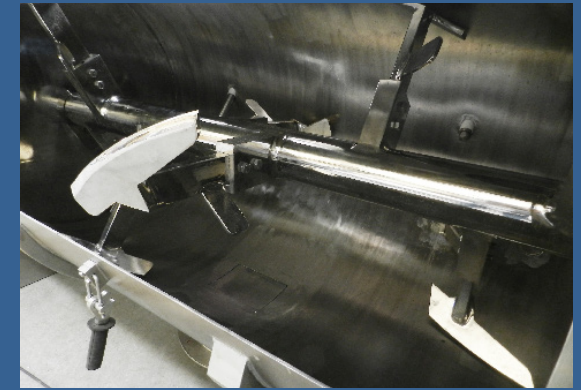
The Horizontal Plough and Paddle Mixer is suitable for the production of granular, dust and paste like materials. It stands out with its protective and precise mixing processes. A very good circulation of materials ensures exact process repetitions also for large batches.

The mixer performs both, simple and complex mixing processes. Connected with the shaft of the agitator, the blades rotate in a horizontal drum. As a result a turbulence is obtained, which continuously incorporates

all the product particles into the mixing process. Dead spots or slow motion areas, does not occur.

The mixer normally contains plough or paddle type blades. The designs are tailored on the needs of the respective blend materials.

Applications: Food industry · Animal feed industry · Chemical industry · Building material industry



HORIZONTAL PLOUGH AND PADDLE MIXER

FEATURES

Body size: 0,5 to 20 m³

Body shape: Cylindrical

Shaft: Single

Blades: Ploughs or paddles

Material: Stainless steel, wear-resistant steels, duplex steel etc.

Interior Surface: Polished (Ra~0,2)

Safety lock

Gear box: Yilmaz, Nord, Bonfiglioli, Sew Eurodrive, etc.

Engines: ABB, Sew Eurodrive, Gamak, Nord, Weg, etc.

Mechanical Seals (Choppers only): Eagle Burgmann, Chesterton, AESSEAL etc

OPTIONS

- Sampling valve
- Heating & cooling jackets
- Heated / cooled mainshaft
- High speed choppers
- Liquid dosing nozzles
- Various automation sensors
- Constructions for vacuum and pressure processes
- Frames and platforms
- Frequency controls
- Remote controls
- CIP
- Weighing system
- Electrical panels
- CE, ATEX, EAC, etc.



HORIZONTAL PLOUGH AND PADDLE MIXER

The table below refers to the standard performance of Horizontal Plough and Paddle Mixer.
The standard performance include following components:

Body shape: Cylindrical

Shaft: Single

Blades: Ploughs or paddles

Material:Stainless steel

1.4301 (AISI 304).

Interior Surface: Polished

Safety lock

Gear box with Engine

Model No	Body Dia.	Body Height	Working capacity %30 - %70
	mm	mm	lt.
P 650	Ø 770	1.400	195 - 455
P 1.250	Ø 960	1.790	380 - 890
P 2.000	Ø 1.120	1.990	590 - 1.370
P 3.000	Ø 1.120	2.990	880 - 2.060
P 4.000	Ø 1.320	3.000	1.200 - 2.800
P 4.800	Ø 1.320	3.490	1.430 - 3.340



HORIZONTAL RIBBON MIXER



THE CLASSIC ONE

HORIZONTAL RIBBON MIXER

PROCESS EFFICIENCY

Mixes: powder, granulates

Batch sizes: 500 - 20.000 liter

Useful filling degree: 40 - 70%

Mixing time: 20 - 30 min.

Cleaning time (including drying): > 45 min.

Cleanliness level in %: 70 - 80%

Compatible for choppers: no

Isimsans Ribbon Mixer provides homogeneous and economically efficient mixing processes. They are suitable for damp and dry bulk goods. Animal oils, water and vegetable oils can be dosed in to the powders is necessary..

The mixer consists of a Omega or mixer body and a single shaft with double helix blades. This mixer can be designed high hygiene standards.

Applications: Food industry · Animal feed industry · Chemical industry · Building material industry



HORIZONTAL RIBBON MIXER

FEATURES

Body size: 0.5 to 20 m³

Body shape: Omega form

Shaft: Single

Blades: Double helix

Material: stainless steel, wear-resistant steel, duplex steel, etc.

Interior Surface: Polished
(Ra~0,2)

Safety lock

Gear box: Yilmaz, Nord,
Bonfiglioli, Sew Eurodrive, etc.

Engines: ABB, Sew Eurodrive,
Gamak, Nord, Weg, etc.

OPTIONS

- Sampling valve
- Heating and cooling jackets
- Liquid dosing systems
- Various automation sensors
- Support frames and platforms
- Speed controls
- Remote controls
- Weighing systems
- Filling systems
- CIP
- Electrical panels
- CE, ATEX, EAC, etc.



HORIZONTAL RIBBON MIXER

The table below refers to the standard performance of Horizontal Ribbon Mixer.

Body shape: Omega form or

Shaft: Single

Blades: Double helix

Material: Stainless steel

(1.4301 - AISI 304)

Interior Surface: Polished (Ra~0,2)

Safety lock

Gear box with engine

Model No	Body Height	Body Width	Body Length	Working Capacity %40 - %70
	mm	mm	mm	lt.
R 135	550	400	750	55-95
R 250	660	500	900	100-180
R 500	550	470	2.500	200-350
R 650	790	620	1.500	260-450
R 1.000	960	770	1.600	400-700
R 1.600	1.020	870	2.250	640-1.130
R 1.800	1.020	870	2.500	720-1.250
R 2.600	1.200	1.060	2.500	1.045-1.830
R 3.350	1.350	1.200	2.500	1.350-2.360
R 4.000	1.350	1.200	3.000	1.620-2.835
R 5.000	1.500	1.330	3.000	2.000-3.500



VERTICAL HELIX MIXER



THE PHENOMENAL ONE

VERTICAL HELIX MIXER

PROCESS EFFICIENCY

Mixes: powder, granulates,
paste like products

Batch sizes: 300 - 40.000 liter

Useful filling degree: 10 - 80%

Mixing time: ~ 5 min.

Cleaning time (including drying): ~ 15 min.

Cleanliness level in %: ~ 98%

Compatible for choppers: yes

The vertical helix mixer meets highest requirements. The mixer is suitable for the processing of powder products, wet goods and pastes in various designs and dimensions. Considering very high hygiene standards the mixer provides excellent mixes, short mixing times and large batches.

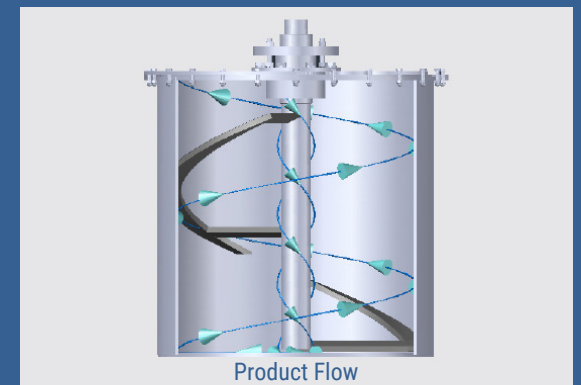
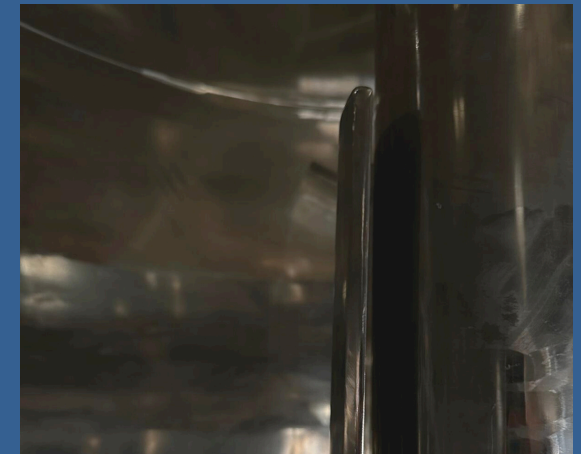
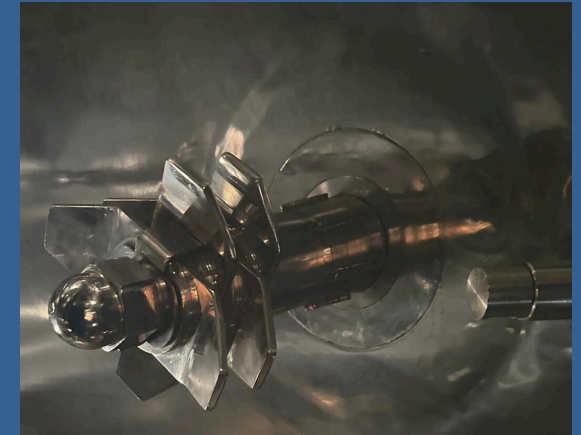
The vertical mixing tool runs at a variable speed. The mix is at the outer end of the mixing chamber conveyed upwardly and from there in the center of the container again into a downward flow. The material to be mixed are thereby three-dimensionally reshaped.

The mixing chamber is made of stainless steel. A laterally inserted door allows inspection and cleaning. Pneumatically opening outlets are located on the bottom. The mixing shaft is only supported on the top.

There are no bearing or housing elements in the mixing area.

The criteria for selecting the right design are far beyond purely functional. Vertical mixers are designed according to customer requirements in order to provide highest hygiene standards, easy cleanability and to apply manufacturing options in different specifications.

Applications: Food industry · Animal feed industry · Chemical industry · Building material industry
· Pharmaceutical industry



VERTICAL HELIX MIXER

FEATURES

Body size: 0.3 to 40 m³

Body shape: Cylindrical

Shaft: Single

Blades: Single helix

Material: stainless steel, wear resistant steels, duplex steels etc.

Interior Surface: CIP bale, polished (Ra~0,2)

Safety lock

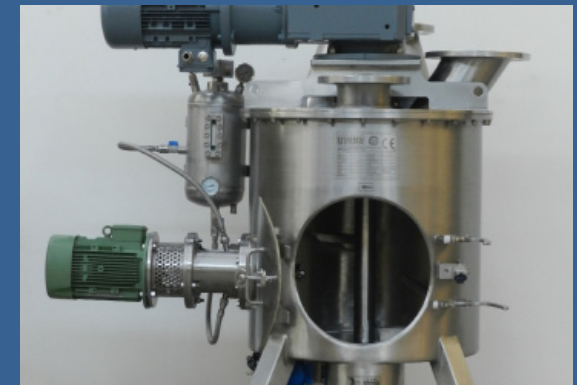
Gear box: Yilmaz, Nord, Bonfiglioli, Sew Eurodrive, etc.

Engines: ABB, Sew Eurodrive, Gamak, Nord, Weg, etc.

Mechanic seals (Chopper only): Eagle Burgmann, Chesterton, AESSEAL etc.

OPTIONS

- Sampling cover
- Sightglass with illumination
- Second inspection doors
- Heating & cooling jackets
- High speed choppers
- Liquid dosing nozzles
- Mixing container in single or double-walled designs (depending on process)
- Various automation sensors
- Constructions for vacuum and pressure processes
- Frames and platforms
- Frequency controls
- Remote controls
- CIP
- Electrical panel
- CE, ATEX, EAC, etc.



VERTICAL HELIX MIXER

The table below refers to the standard performance of Vertical Helix Mixers.

The standard performance include following components:

Body shape: Cylindrical

Shaft: Single

Blades: Single helix

Material: Stainless steel

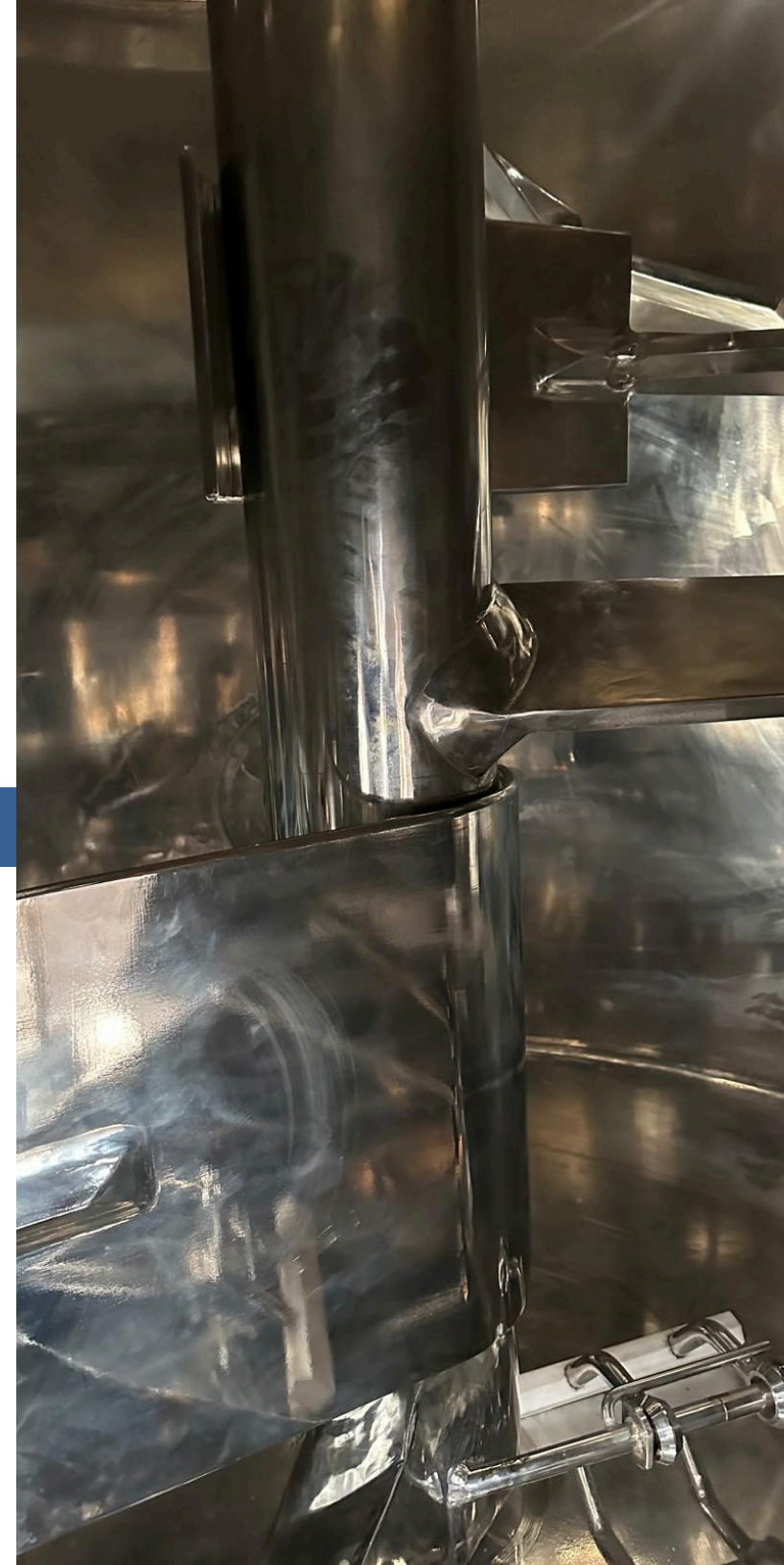
(1.4301 - AISI 304)

Interior Surface: Polished (Ra ~ 0,2)

Safety lock

Gear box with engine

Model No	Body Dia.	Body Height	Working Capacity %10 - %80
	mm	mm	lt.
D 300	Ø 700	750	30-240
D 650	Ø 955	950	65-540
D 1.050	Ø 1.116	1.100	105-860
D 1.350	Ø 1.200	1.200	135-1.080
D 2.550	Ø 1.730	1.100	255-2.070
D 3.500	Ø 1.730	1.500	350-2.820
D 5.100	Ø 1.930	1.750	510-4.000
D 6.250	Ø 1.930	2.150	625-5.000
D 8.100	Ø 2.280	2.000	810-6.530
D 13.500	Ø 2.800	2.200	1.350-10.800
D 19.400	Ø 2.800	3.150	1.940-15.500
D 26.400	Ø 3.100	3.500	2.640-21.100
D 39.000	Ø 3.460	4.150	3.900-31.200
D 51.200	Ø 3.850	4.400	5.120-41.000



Quality assurance for absolute reliability

Safety and quality is our utmost priority. At Isimsan, you rely on continuous quality controls and on extensive external certifications, that often go beyond legal requirements.

Both, during the production process and after its completion, all the machines we realize are extensively examined

for the long life and absolute safety of your production technology.

Isimsan's engineering solutions meet the highest requirements, and they are certified according the guidelines and regulations of leading international standards.



Quality
Management



Environmental
Standards



Welding Technology
and Supervision
(ISO 3834 & 14731)



EuroAsia
Conformity



CE 2006/42/EC
CE 2014/29/EU
CE 2014/68/EU



ATEX Product Line
2014/34/EU



U.S. Food and Drug
Administration



Gulf Cooperation
Council

Service

Your facilities must always be running. Otherwise, the damage occurred due to their downtime might cost a lot more than their purchasing prices. Aside from providing first class products to prevent this financial damage from happening, our authorized technical service is also well-disposed at your need at all times.

We operate throughout the globe during the processes of assembling our facilities and their commissioning. We are training our clients in all the required fields, including

operational inflows, how to execute correct maintenances, and the safe utilization of controller technology. We provide original spare parts, trouble shooting supervisions, and maintenance services. Our global sales representatives and service partners enable us to react quickly and flexibly to your needs.

We are there for you.



CONSULTANCIES & PILOTING

TRAINING



TESTINGS

MAINTENANCES, INSPECTIONS & REPAIRS



SERVICE PACKAGES

ORIGINAL WEAR & SPARE PARTS



ASSEMBLIES, COMMISSIONINGS

WORLDWIDE SUPPORT
E-MAIL : sales @isimsan.com.tr
PHONE : + 90 232 877 05 82

Address: Cumhuriyet Mah.9081 Sok. No:59/1 Ulucak
Kemalpaşa İZMİR

ISIMSAN®