



Rotating Wing Dust Filter Systems

PRODUCT INFORMATION

The dust filter system is suitable for a wide range of manufacturing processes. The high-quality processing, the simple operation and a very efficient dust filter system meets highest hygiene and quality standards.

APPLICATIONS

- Food
- Animal feed
- Chemicals
- Building materials

DESCRIPTION

The dust filter system has a cylindrical shape with a downwardly conical dust collector. The material is made of stainless steel.

The heart of the system is a compressed air rotary wing system. This extremely efficient and quiet cleaning system consists of wing blades, which rotate inside the cartiges and release the dust from the filter membranes with compressed air jets.

CERTIFICATIONS

Isimsan manufactures according to the following International directives and regulations:

- CE 2006/42/EC (machinery directive)
- CE 2014/29/EU (pressure vessel directive)
- CE 2014/68/EU (pressure vessel directive)
- ATEX product line 2014/34/EU
- EHEDG hygiene guidelines
- GMP (Good Manufacturing Practices)
- FDA (U.S. Food and Drug Administration)
- EAC (EuroAsia Comformity)

Isimsan is certified in terms of quality management (ISO 9001) environmental standards (ISO 14001), welding technology and supervision (ISO 3834 & 14731).



FILTER SYSTEM

The rotaring filter technology is an extremely efficient cleaning system which detaches the filter cake over the entire length of the filter cartridge.

FEATURES / FILTER SYSTEM

JET PULSE ROTATING WING

Material: Aluminium

Air pulse rate: 1.5 s ~ 3 s

Pulse valve: Atex ex-proof

CARTRIDGE

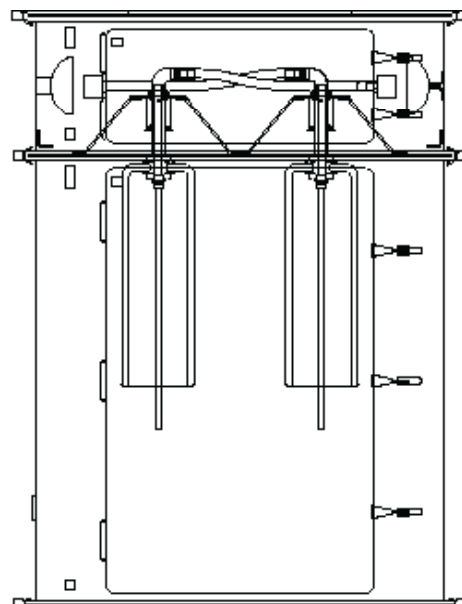
Material: 100% Polyester

Thickness (mm): 0,8 (± 0,1)

Filter sensitivity: ~1 µm

Air permeability: 166 (± 33) l / m² * s

Measurements: Ø 320 L: 600

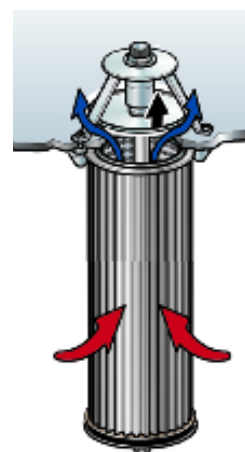


CHARACTERISTICS

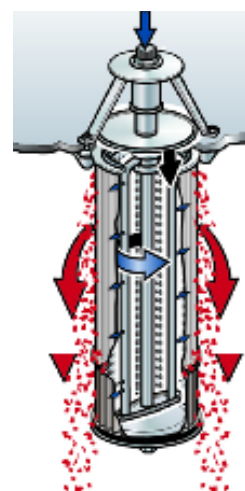
- Extremely efficient
- Uniform cleaning
- Low noise level
- Minimal compressed air consumption
- Worldwide distribution

OPTIONS

- Frame and platform
- Filter cake automatic discharging system
- Remote control

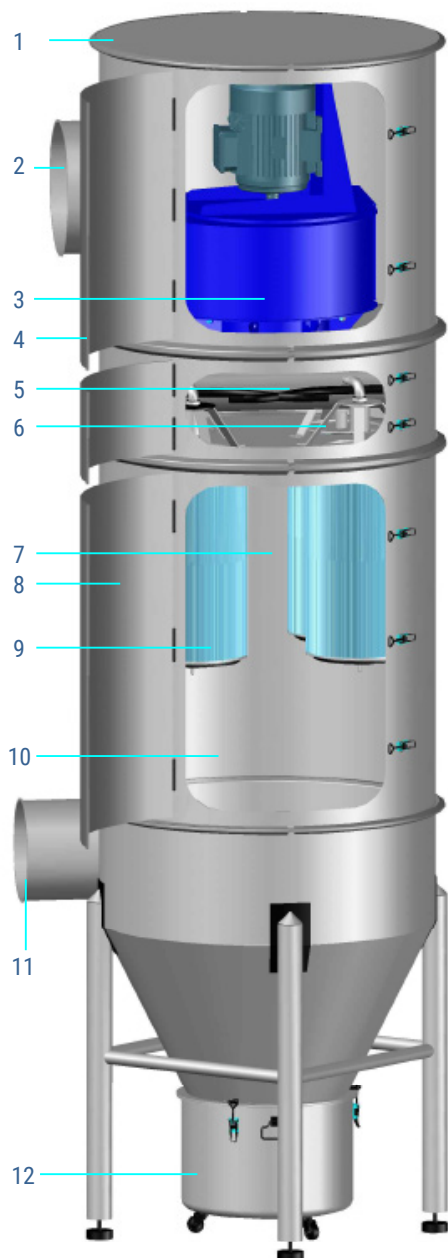


Cartridge



Jet Wing

CONSTRUCTION DETAILS



Housing material: AISI 304, stainless steel
 Surface: Not threaded, polished, mirror polished

Cleaning jet wing
 Pulse duration: 1.5 s ~ 3 s

Air speed: 33 m / s
 Min. partical sizes: 0,02 mm

Dimensions: Ø 1040 mm, H 3600 mm

Dust container volume: ~70 litre

Filter hair flow: ~4000 m³ / h

- | | |
|----------------------|--------------------------|
| 1. Acoustic hood | 7. Untreated gas chamber |
| 2. Blow-out pipe end | 8. Maintenance door |
| 3. Fan | 9. Cartridge |
| 4. Maintenance door | 10. Dust section |
| 5. Clean air section | 11. Dirty air inlet |
| 6. Jet pulse wings | 12. Dust bucket |

ISIMSAN[®]

WORLDWIDE SUPPORT

E-MAIL : sales @isimsan.com.tr

PHONE : + 90 232 877 05 82

Address: Cumhuriyet Mah.9081 Sok. No:59/1 Ulucak
Kemalpaşa İZMİR

ISIMSAN[®]
MIXER & PLANT ENGINEERING