

Horizontal Ribbon Mixer



PRODUCT INFORMATION



Isimsans Ribbon Mixer provides homogeneous and economically efficient mixing processes. They are suitable for damp and dry bulk goods. Animal oils, water and vegetable oils can be mixed without problems.

APPLICATIONS

- Food
- Animal feed
- Chemicals
- Building materials

DESCRIPTION

The mixer consists of a Omega mixer body and a single shaft with double helix blades. The blades move the mix in opposite directions. Thanks to the geometric design of the blender, a intensive and at the same time protective mixing process at low revolutions is achieved.

CERTIFICATIONS

Isimsan manufactures according to the following International directives and regulations:

- CE 2006/42/EC (Machinery Directive)
- EHEDG (Hygiene Guidelines)
- CE 2014/29/EU (Pressure Vessel Directive)
- GMP (Good Manufacturing Practices)
- CE 2014/68/EU (Pressure Vessel Directive)
- FDA (U.S.Food and Drug Administration)
- ATEX product line 2014/34/EU
- EAC (EuroAsia Comformity)

Isimsan is certified in terms of quality management (ISO 9001), environmental standards (ISO 14001), welding technology and supervision (ISO 3834 & 14731) and control technology (2006/42/EC).





CONSTRUCTION DETAILS

FEATURES

Body size: 0.5 to 20 m³

Body shape: Omega form

Material: Stainless steel (1.4301, 1.4401), wear-resistant steel, Duplex steel etc.

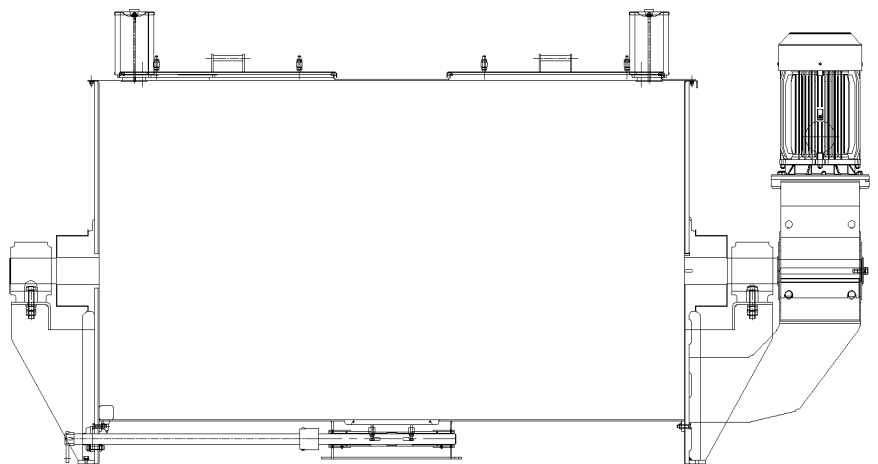
Interior Surface: Polished (Ra~0.2)

Shaft: Single

Blades: Double helix

OPTIONS

- Sampling valf
- Heating and cooling jackets
- Liquid dosing systems
- Various automation sensors
- Support frames and platforms
- Speed controls
- Remote Controls
- Weighing systems
- Filling systems
- etc.



HORIZONTAL RIBBON MIXER



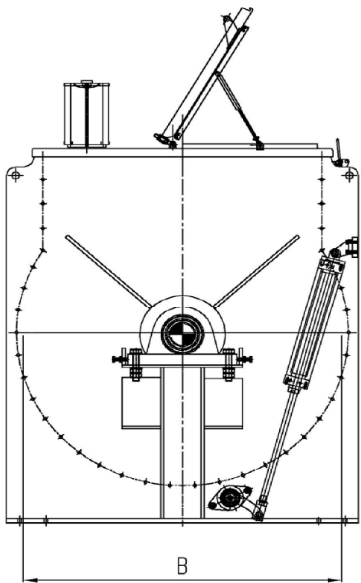
The table below refers to the standard performance of Horizontal Ribbon Mixer. Control Panel is not included.

Body Type: Omega
Material: Stainless steel 1.4301 (AISI 304)
Interior Surface: Polished (Ra ~0,2)

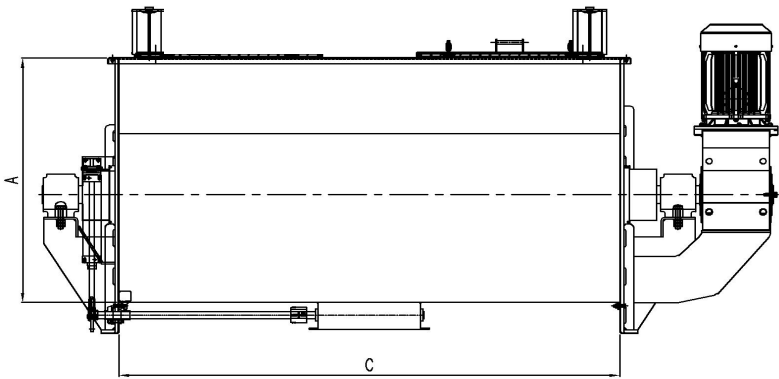
Shaft: Single
Blades: Double Helix

Safety Lock
Gearbox with engine

Model No	A	B	C	Working Capacity %40 - %70
	mm	kg	mm	lt
R 135	500	400	750	55 - 95
R 250	660	500	900	100 - 180
R 500	550	470	2.500	200 - 350
R 650	790	620	1.500	260 - 450
R 1.000	960	770	1.600	400 - 700
R 1.600	1.020	870	2.250	640 - 1130
R 1.800	1.020	870	2.500	720 - 1.250
R 2.600	1.200	1.060	2.500	1.045 - 1.830
R 3.350	1.350	1.200	2.500	1.350 - 2.360
R 4.000	1.350	1.200	3.000	1.620 - 2.835
R 5.000	1.500	1.330	3.000	2.000 - 3.500



Isımsan designs according to customer specifications.



CERTIFICATIONS

Isımsan manufactures according to the following International directives and regulations:

- CE 2006/42/EC (Machinery Directive)
- CE 2014/29/EU (Pressure Vessel Directive)
- CE 2014/68/EU (Pressure Vessel Directive)
- ATEX product line 2014/34/EU
- EHEDG (Hygiene Guidelines)
- GMP (Good Manufacturing Practices)
- FDA (U.S.Food and Drug Administration)
- EAC (EuroAsia Comformity)

Isımsan is certified in terms of quality management (ISO 9001), environmental standards (ISO 14001), welding technology and supervision (ISO 3834 & 14731) and control technology (2006/42/EC).



WORLDWIDE SUPPORT

E-MAIL : sales @isimsan.com.tr

PHONE : + 90 232 877 05 82

Address: Cumhuriyet Mah.9081 Sok. No:59/1 Ulucak
Kemalpaşa İZMİR