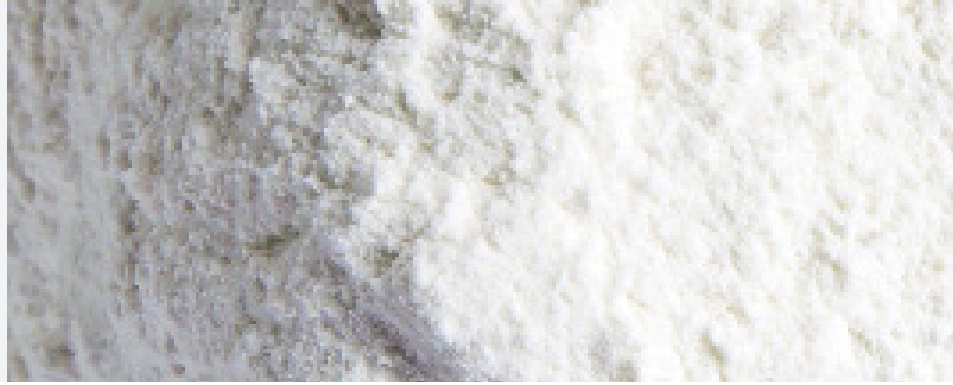


Industrial Safety Sieve System



PRODUCT INFORMATION



The Industrial Safety Sieve Systems protects facilities from contamination and damage. Large particles are trapped by the safety sieve and are not transferred to the next material flow. The safety sieve is separating the agglomerates so that the next material flow runs smoothly.

APPLICATIONS

- Food
- Animal feed
- Fertilizers
- Chemicals
- Pharmaceuticals
- Building materials

DESCRIPTION

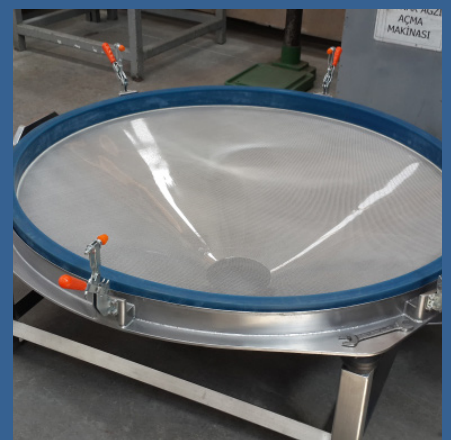
The vibration sieve system it is considering high hygiene standards and includes dust exproof engines. The construction of safety sieve systems is performed in compliance with customer specific requirements.

CERTIFICATIONS

Isimsan manufactures according to the following International directives and regulations:

- CE 2006/42/EC (machinery directive)
- EHEDG hygiene guidelines
- CE 2014/29/EU (pressure vessel directive)
- GMP (Good Manufacturing Practices)
- CE 2014/68/EU (pressure vessel directive)
- FDA (U.S. Food and Drug Administration)
- ATEX product line 2014/34/EU
- EAC (EuroAsia Conformity)

Isimsan is certified in terms of quality management (ISO 9001) environmental standards (ISO 14001), welding technology and supervision (ISO 3834 & 14731) and control technology (2006/42/EC).





CONSTRUCTION DETAILS

FEATURES

Seperating parts: top cover, body, sieve, seals, clamps, engines

Material: stainless steel 1.4301 (other upon request)

Surface: brushed, polished, mirror polished

Body size: 1.480 x 1.700 x 580 mm (other upon request)

Screen form: circle

Screen area: 1,2 m² (bigger upon request)

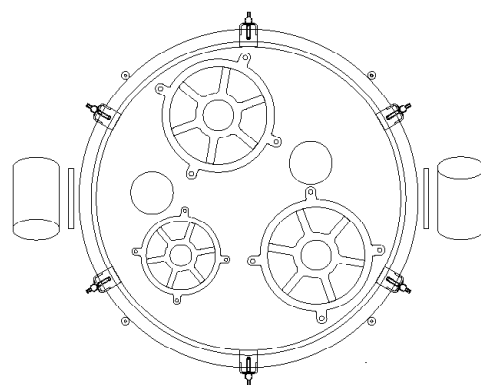
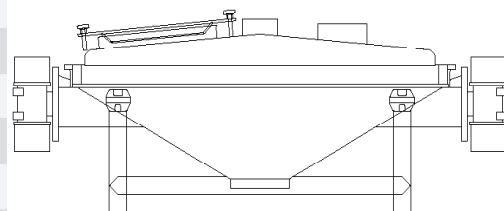
Screen mesh: 0,15 - 5,35 mm

Number of screens: 1

Vibrating machine: 2 x unit at the side

kW: 0,28

Hertz: 50



OPTIONS

- Emergency sensors
- PLC systems (Programmable Logic Controller)
- Remote controls
- Frames and platforms
- Pneumatic valves
- Magnet boxes
- Dust sections
- Maintenance holes



INDUSTRIAL SAFETY SIEVES



The table below refers to the standart performance of industrial safety sieves.

Material: Stainless steel 1.4301 (AISI 304)
Surface: brushed (outside),
polished (inside)

Screen form: circle
Mesh size: individual

Vibration engine: 1 Piece

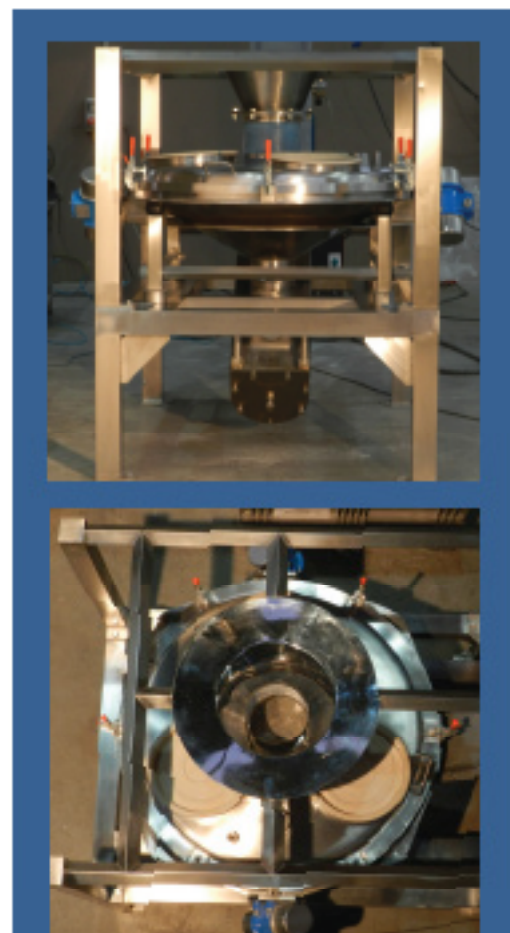
- - -

Sieve Size	Sieve Diameter	Weight	Vibrating Motor	Drive
m²	mm	kg	Piece	kW
1,2	~1.200	220	2	0,28

Isimsan is designing safety sieves individually according to customer specifications.

This includes the choice of material, of drive models, of feeding and discharging systems and of many other equipment.

We are there for you.



CERTIFICATIONS

Isimsan manufactures according to the following International directives and regulations:

- CE 2006/42/EC (machinery directive)
- CE 2014/29/EU (pressure vessel directive)
- CE 2014/68/EU (pressure vessel directive)
- ATEX product line 2014/34/EU
- EHEDG hygiene guidelines
- GMP (Good Manufacturing Practices)
- FDA (U.S. Food and Drug Administration)
- EAC (EuroAsia Comformity)

Isimsan is certified in terms of quality management (ISO 9001) environmental standards (ISO 14001), welding technology and supervision (ISO 3834 & 14731) and control technology (2006/42/EC).



WORLDWIDE SUPPORT
E-MAIL : sales @isimsan.com.tr
PHONE : + 90 232 877 05 82

Address: Cumhuriyet Mah.9081 Sok. No:59/1 Ulucak
Kemalpaşa İZMİR